

Electrical Specifications:

CURRENT: 0.50 A PER CONTACT.

CONTACT RESISTANCE: 50 MILLIOHMS MAX;

INSULATION RESISTANCE:

1000 MEGAOHMS MIN

AT 100 VDC FOR 1 MINUTE.

DIELECTRIC WITHSTANDING VOLTAGE: 300 VDC MIN;

TEMPERATURE:

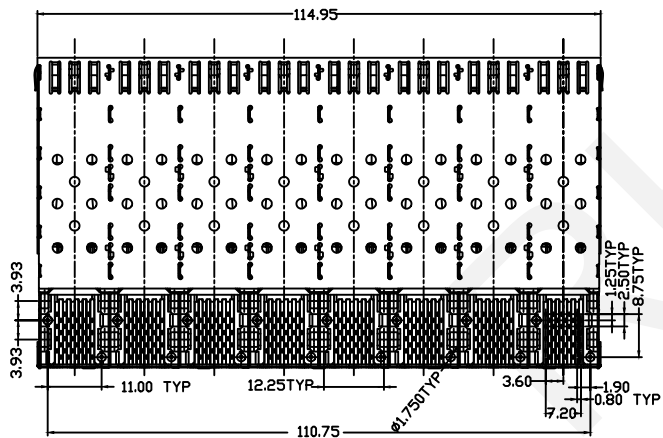
OPERATION: -40°C~+85°C

STORAGE: -55°C~+105°C

LIGHTPIPE PAD LAYOUT IS FOR LOW-PROFILE LED PACKAGE.

LED SIZE(LxWxH): 2x1x0.4MM MAX.

RoHS COMPLIANCE.



MECHANICAL:

CAGES: NICKEL SILVER ALLOY, THICKNESS 0.25MM.

CONNECTOR HOUSING: GLASS FILLED PLASTIC, 94V-0, COLOR: BLACK.

OVERMOLDED TERMINAL HOUSING: GLASS FILLED PLASTIC, 94V-0, COLOR: BLACK.

LIGHTPIPES: POLYCARBONITE, 94V-0, COLOR: CLEAR.

LIGHTPIPE HOLDER: GLASS FILLED PLASTIC, 94V-0, COLOR: BLACK.

CLIP: STAINLESS STEEL.

TERMINAL: PHOSPHOR BRONZE.

GOLD PLATING FOR CONTACT AREA, THICKNESS SEE OPTION.

TIN PLATING FOR PRESS FIT AREA.

NICKEL PLATING AS UNDERLAYER FOR WHOLE TERMINAL.

NINGBO RHT ELECTRONIC CO.,LTD

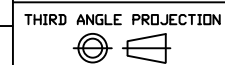
| | | | | |
|----------|----------------|-------|--------|-----------|
| UNITS:mm | SHEET SIZE: A4 | | | SCALE:--- |
| 0~3 | 3~18 | 18~50 | 50~120 | |
| ±0.12 | ±0.15 | ±0.3 | ±0.5 | |

DRWN BY PAN

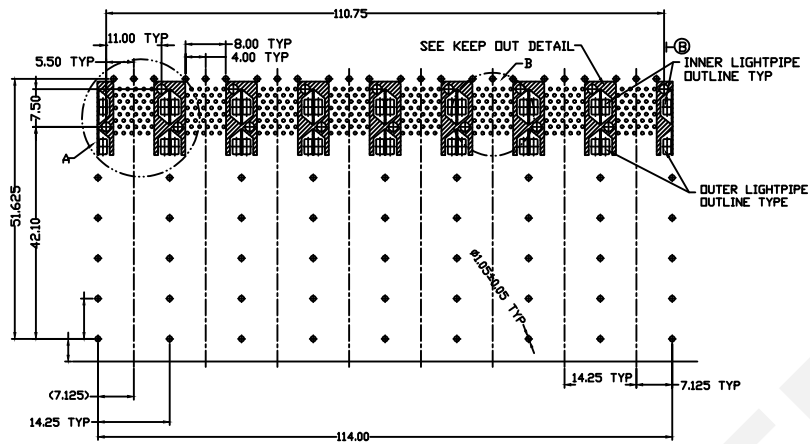
CHK'D BY FENG

APPR BY ZHAN

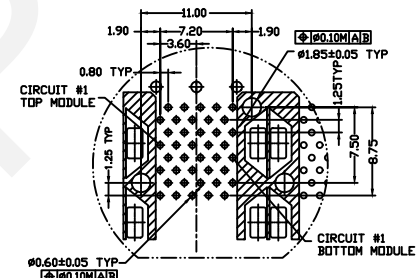
Ethernet Connectors



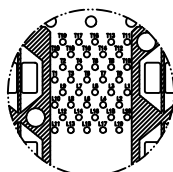
RHTLYFP-021



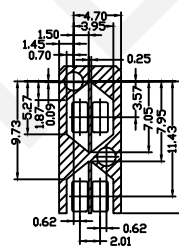
RECOMMENDED PCB LAYOUT-COMPONENT SIDE
 PCB THICKNESS 1.6MM MIN
 TOLERANCE: $\pm 0.05 \text{ MM}$



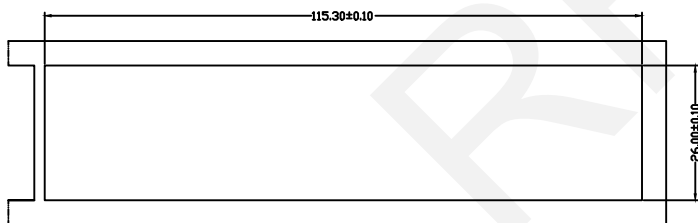
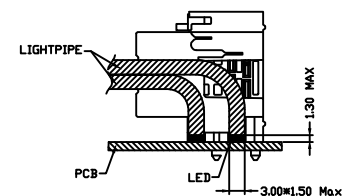
DETAIL A
 SCALE: 2:1



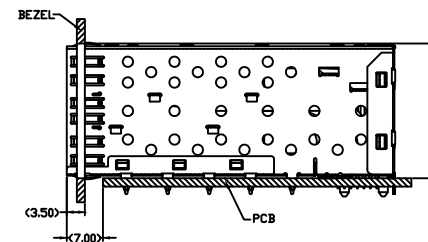
CONNECTOR PIN-OUT DETAIL
 COMPONENT SIDE OF BOARD
 DETAIL B
 SCALE: 2:1



KEEP OUT
 ZONE DETAIL
 SCALE: 2:1



RECOMMENDED BEZEL CUT-OUT CENTER DETAIL
 BEZEL THICKNESS 0.8-2.6MM



 NINGBO RHT ELECTRONIC CO.,LTD

| | | | | |
|------------|----------------|-----------|-----------|--|
| UNITS:mm | SHEET SIZE: A4 | | SCALE:--- | |
| 0~3 | 3~18 | 18~50 | 50~120 | |
| ± 0.12 | ± 0.15 | ± 0.3 | ± 0.5 | |

DRWN BY PAN
 CHK'D BY FENG
 APPR BY ZHAN

Ethernet Connectors

THIRD ANGLE PROJECTION


RHTLYFP-021