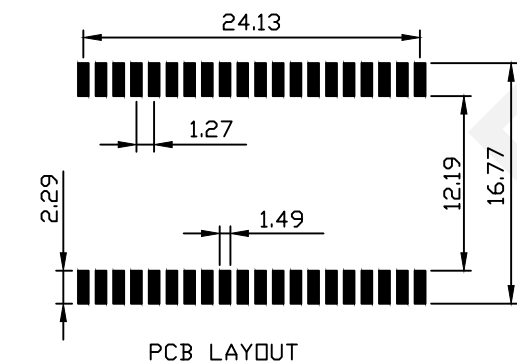
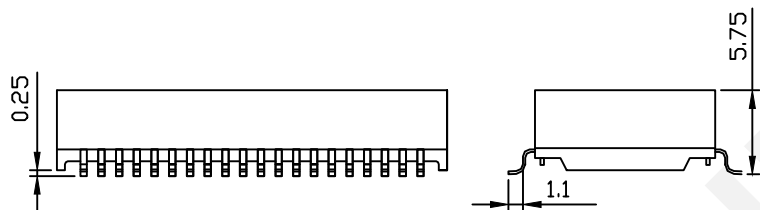
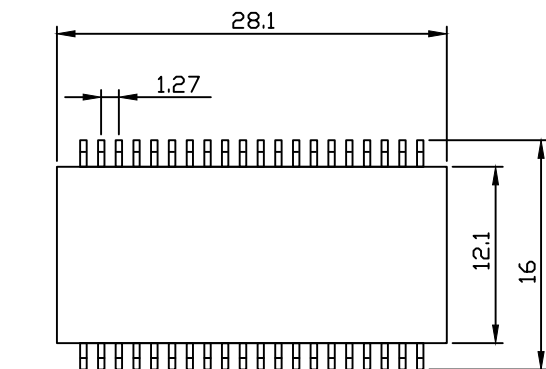
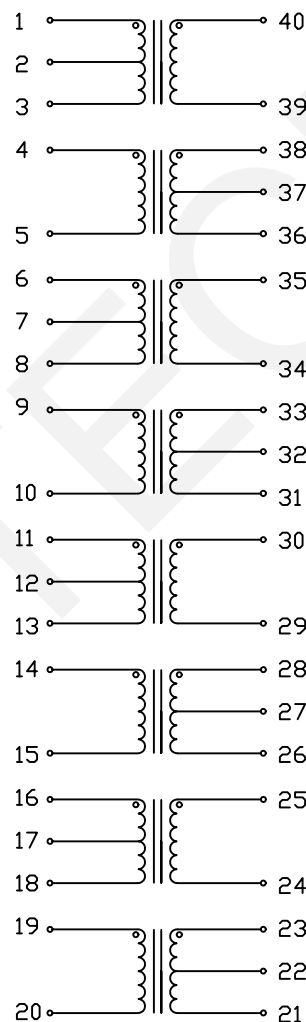


Dimension: unit:mm



Schematic



Electrical Specification:

@25°C Operating Temperature 0 to +70°C

Part No.:RHTLY240M-S009LF

Turn Ratio (±2%) TX 1:2CT

RX 1CT:2

DCL: TX 1.2mH Min.

RX 1.2mH Min.

LL: TX 0.6μH Max.

RX 0.6μH Max.

C<sub>ww</sub>: TX 35pF Max.

RX 35pF Max.

DCR: TX 1.0Ω Max.

RX 1.0Ω Max.

Primary Pins Transmit 4-5, 9-10, 14-15, 19-20

Receive 1-3, 6-8, 11-13, 16-18

Hi-Pot 1500 Vrms Min.

Features:

- 1.Designed to meet CCITT&FCC requirements.
- 2.Peak solder temperature rating per Table 5-2 in IPC/JEDEC J-STD-020C.
- 3.RoHS Compliant

RHTLY240M-S009LF-T Packing: Tube

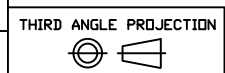
RHTLY240M-S009LF-R Packing: Tape&Reel

NINGBO RHT ELECTRONIC CO.,LTD

UNITS:mm	SHEET SIZE: A4			SCALE:---
0~3	3~18	18~50	50~120	
±0.12	±0.15	±0.3	±0.5	

DRWN BY PAN  
CHK'D BY FENG  
APPR BY ZHAN

T1/E1/CEPT/ISDN-PRI Modules



RHTLY240K-S009LF