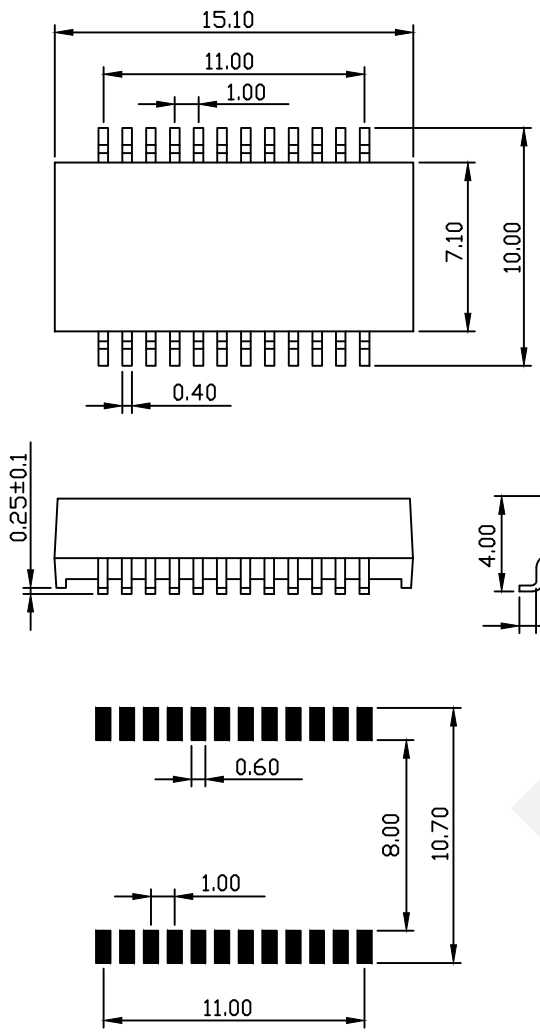
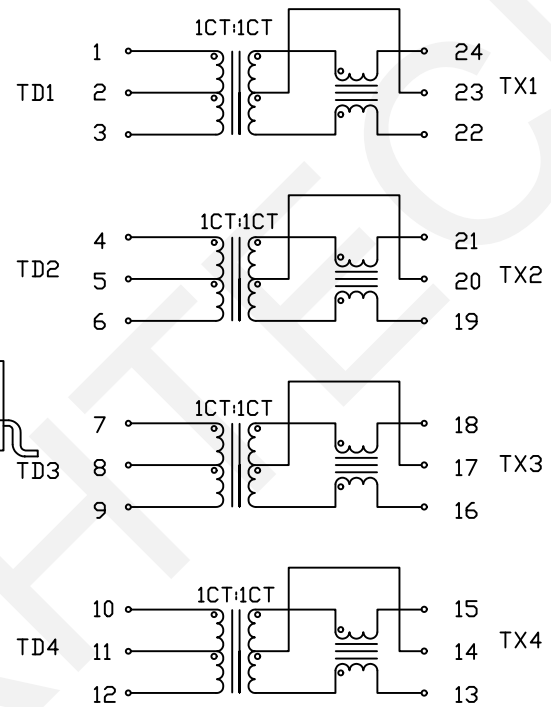


Dimension: unit:mm



Schematic



Electrical Specification:

@25°C Operating Temperature 0 to +70°C  
 Part No.:RHTLY224K-S005LF  
 Turn Ratio(±3%): TX 1CT:1CT  
 RX 1CT:1CT  
 □CL,primary@ 100KHz,0.1Vrms,8mA: 350uH Min  
 Leakage primary@10KHz,0.1Vrms, 0.5uH Max  
 Cww (Pri:Sec.):35pF Max  
 DCR (Ω): Primary: 0.9 Max  
 Secondary: 1.2 Max  
 Insertion loss: 1-100MHz: -1.0dB max  
 Return loss: 1-30MHz: -18dB min  
 40MHz: -16dB min  
 50MHz: -16dB min  
 60-100MHz: -10dB min  
 CMRR: 1-60MHz: -35dB min  
 60-100MHz: -30dB min  
 Crosstalk: 1-100MHz: -33dB min  
 Isolation Voltage: 1500 Vrms Min.  
 Features:  
 1.Designed to meet IEEE 802.3 requirements.  
 2.Operating Humidity: 90%RH  
 3.Storage temperature range: -40~+80°C, 90%RH  
 4.RoHS Compliant  
 RHTLY224K-S005LF-T Packing: Tube  
 RHTLY224K-S005LF-R Packing: Tape&Reel

NINGBO RHT ELECTRONIC CO.,LTD

UNITS:mm	SHEET SIZE: A4			SCALE:---
0~3	3~18	18~50	50~120	
±0.12	±0.15	±0.3	±0.5	

DRWN BY PAN  
 CHK'D BY FENG  
 APPR BY ZHAN

100/1000 Base-Tx Transformer Modules  
 RHTLY224K-S005LF