

SPECIFICATIONS

Rating: 0.5A 50VDC
 Contact Resistance: 50MΩ max
 Insulation Resistance: 500VDC 100MΩ Min
 Dielectric Strength: 100V AC 1 Minute
 Operating Force: 100gf~800gf
 Electrical Life: 10,000 cycles

ORDER INFORMATION

RHTGYS06 -1 2 F 41 - X X -X

Slide Switch Type

Pole

Throw

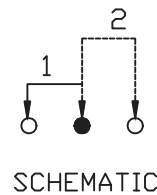
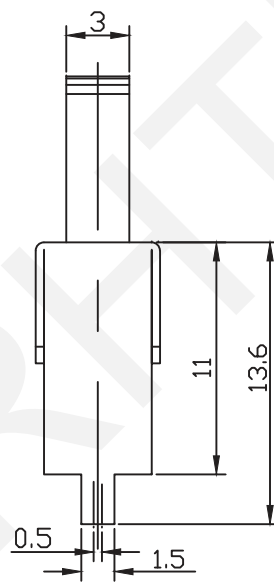
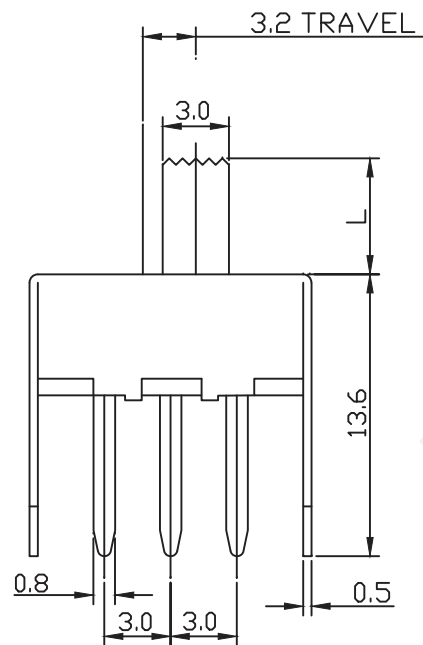
Travelling					
C	D	E	F	G	H
1.5	2.0	2.5	3.0	3.5	4.0
I	J	K	L	N	P
4.5	5.0	5.5	6.0	7.0	8.0

Sequential No.

Knob Type					
RG	G	TG	VG	EG	CG

Knobe Height

Operating Force



RHTECP NINGBO RHT ELECTRONIC CO.,LTD

UNITS:mm	SHEET SIZE: A4		SCALE:---
0~3	3~18	18~50	50~120
±0.12	±0.15	±0.3	±0.5

DRWN BY PAN
 CHK'D BY FENG
 APPR BY ZHAN

Slide Switch Series	
THIRD ANGLE PROJECTION	RHTGYS06-12F41-XX-X