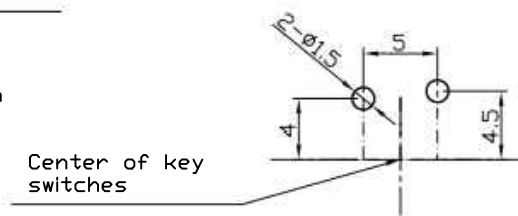
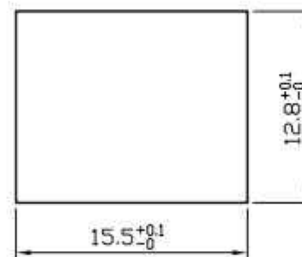
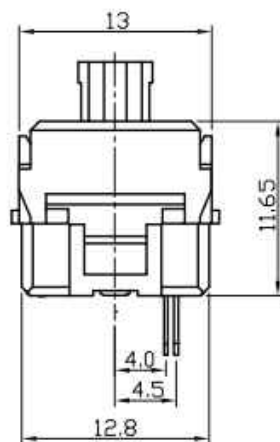


Circuit Diagram



P.C.B. Mounting
Hole Dimensions



Mounting Panel
Hole Dimensions

SPECIFICATION:

Rating: 10mA 12V DC

SIZE: 16.8 x 14.0 x 15.5mm

PCB Terminal : 5 PIN

Operation Force: 60±15gf

Dielectric Strength: AC 100 V 1 Minute

Insulation Resistance: 500 MΩ Min

Contact Resistance: 1MΩ Max.

Operating Temperature: -25°C~+60°C

Operating Life: 10,000,000 Cycles Min

ORDER INFORMATION

RHTGYS-009 C

Switches No.

N: Non Click Type

C: Click Type

RHTECP NINGBO RHT ELECTRONIC CO.,LTD

UNITS:mm

SHEET SIZE: A4

SCALE:---

DRWN BY PAN

Push Switch

0~3

3~18

18~50

50~120

CHK'D BY FENG

THIRD ANGLE PROJECTION

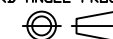
±0.12

±0.15

±0.3

±0.5

APPR BY ZHAN



RHTGYS-009