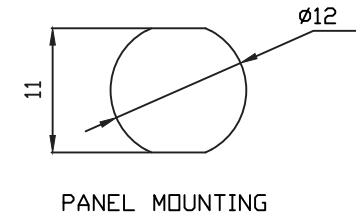
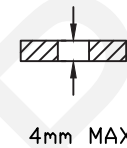
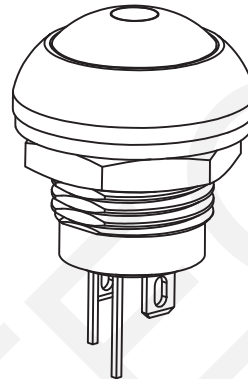
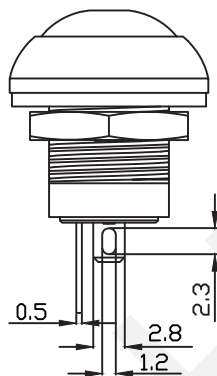
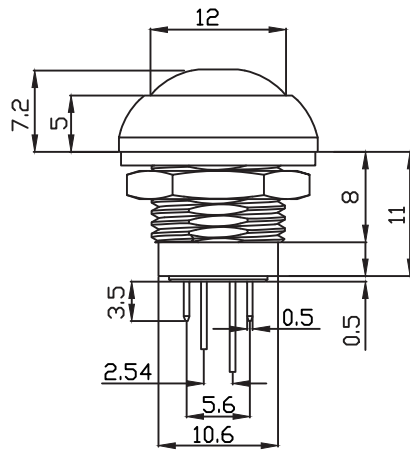


Circuit Diagram



### SPECIFICATIONS

Circuit:SPDT

Current rating:2A

Voltage rating:250VAC

Dielectric withstanding voltage:1000VAC for 1 minute

Contact resistance:50mΩ Max

Insulation resistance:100MΩ Min

Travel:1.5mm± 0.5mm

Operating Force:400±150gf

Operating life:200,000 cycles Min

Solder specifications:260°C for 5seconds

Function:Momentary

Operating temperature:-20°C~+85°C

### ORDER INFORMATION

Product NO.: RHTGYB12-2-M-RB-R

Serial Number \_\_\_\_\_

B	Black	□	Orange
W	White	W	White
U	Blue	U	Blue
G	Green	G	Green
R	Red	R	Red
Cap color X	LED color Y		

**RHTECP** NINGBO RHT ELECTRONIC CO.,LTD

UNITS:mm

SHEET SIZE: A4

SCALE:---

DRWN BY PAN

Push Button Switches

0~3

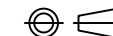
3~18

18~50

50~120

CHK'D BY FENG

THIRD ANGLE PROJECTION



RHTGYB12-2-M-RB-R

±0.12

±0.15

±0.3

±0.5

APPR BY ZHAN