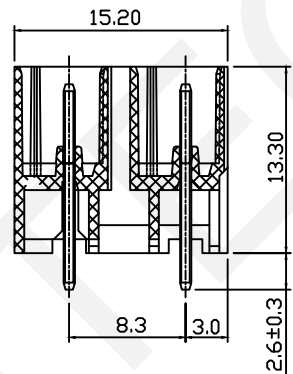


PCB Layout



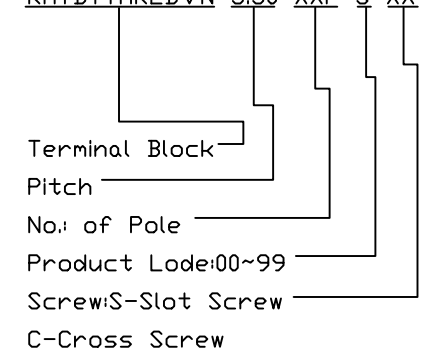
SECTION A-A

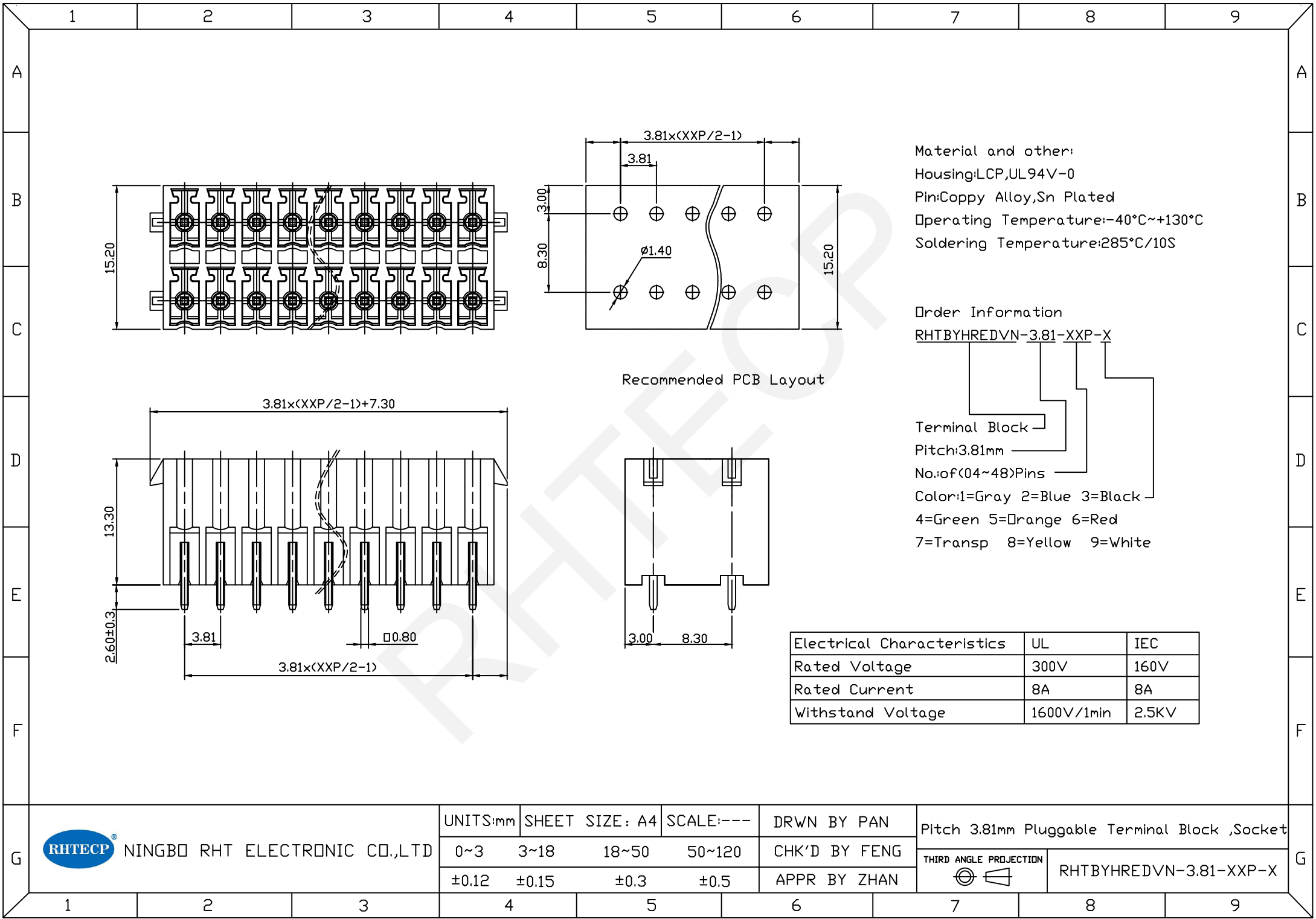
Material  
Pin header: Brass , Tin plated  
Housing: LCP, UL94V-0, Black

Electrical  
Rated voltage: 300V  
Rated current: 8A  
Contact Resistance: 20mΩ  
Insulation resistance: 500MΩ/DC500V  
Withstand voltage: AC2000V/1min

Mechanical  
Temp. Range: -40°C ~ +130°C  
Soldering: 285°C ± 5°C for 10S

Order information  
RHTBYTHREDVN-3.50-XXP-S XX





Material and other:  
Housing:LCP,UL94V-0  
Pin:Copy Alloy,Sn Plated  
Operating Temperature:-40°C~+130°C  
Soldering Temperature:285°C/10S

Order Information  
RHTBYHREDVN-3.81-XXP-X

Terminal Block  
Pitch:3.81mm  
No.of(04~48)Pins  
Color:1=Gray 2=Blue 3=Black  
4=Green 5=Orange 6=Red  
7=Transp 8=Yellow 9=White

Electrical Characteristics	UL	IEC
Rated Voltage	300V	160V
Rated Current	8A	8A
Withstand Voltage	1600V/1min	2.5KV