

1 2 3 4 5 6 7 8 9

A

A

B

B

C

C

D

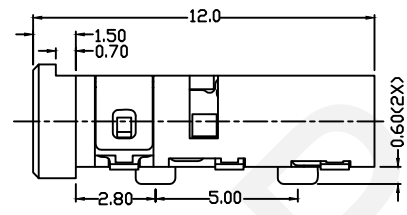
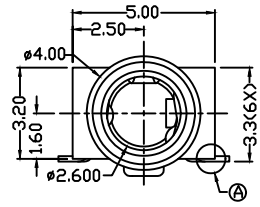
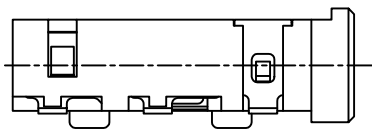
D

E

E

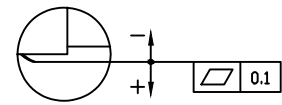
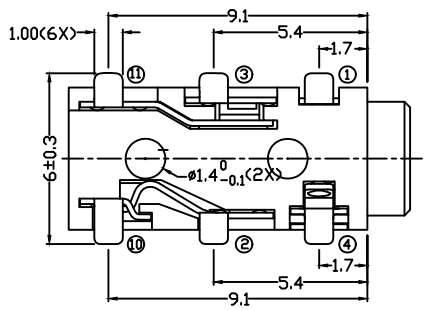
F

F

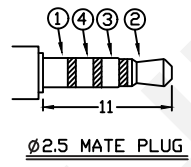


Technical Parameters:  
 Rated Voltage:DC 30V  
 Rated Current: 0.5 A  
 Contact Resistance:0.03Ω,Max  
 Insulation Resistance:100MΩ,Min  
 Pressure:AC500V(50Hz)/1minute  
 Insertion Force:2-20 N  
 Life: 50000 Times  
 Operating Temperature:-30℃~70℃  
 Material:

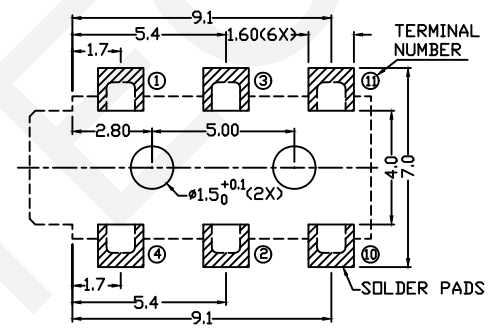
- Terminal1:Copper Alloy
- Terminal2:Ti-Cu
- Terminal3:Copper Alloy
- Terminal4:Copper Alloy
- Terminal10:Brass
- Terminal11:Brass
- Housing:PA6T



A DETAIL COPLANARITY



Ø2.5 MATE PLUG



RECOMMENDED SOLDER PAD LAYOUT

MODEL NO	002	002A	002B	002C
SCHEMATIC				

ORDER INFORMATION

RHTAYPJ2.5-002A

2.5mm Dip Stereo Jack

Schematic:See Annex



NINGBO RHT ELECTRONIC CO.,LTD

UNITS:mm	SHEET SIZE: A4	SCALE:---	DRWN BY PAN
0~3	3~18	18~50	50~120
±0.12	±0.15	±0.3	±0.5
CHK'D BY FENG	APPR BY ZHAN		

SMD Stereo Jack	
THIRD ANGLE PROJECTION	RHTAYPJ2.5-002

1 2 3 4 5 6 7 8 9