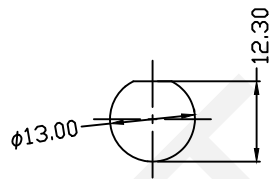


SECTION A-A



PANEL CUT-OUT
Thickness 3.0mm Max

Material & SPEC.

- 1.Shell Material: PPD,PA66 UL94V-0
- 2.Insulation Materials:PPS, High Temperature 260°C
- 3.Contact:Brass,Gold-Plated
- 4.Insulation Resistance:2000MΩ
- 5.Number Of Poles:2~9 Poles
- 6.Coupling:Threaded
- 7.Termination:Solder
- 8.Cable Outer Diameter:Not-4~6.5mm;G-5~8mm
- 9.IP Rating:IP68
- 10.Durability:500 Mating Cycles
- 11.Temperature Range:-25°C~+80°C

ORDER INFORMATION:

RHTOY13 B2-XX

IP68 Connector Type

Male Socket For Panel Mount

Number Of Poles: 2~9 Poles

Solder Contact Arrangement And Spec

Number Of Contact	2	3	4	5	6	7	9
Male Contact Face View							
Rated Current(A)	13A	13A	5A	5A	5A	5A	3A
Contact Diameter	φ1.6x2	φ1.6x3	φ1.0x4	φ1.0x5	φ1.0x6	φ1.0x7	φ0.7x9
Rated Voltage(AC.V)	250V	250V	200V	180V	125V	125V	125V
Test Voltage(AC.V)1 min	1500V	1500V	1500V	1000V	1000V	1000V	1000V
Contact Resistance mΩ	2	2	5	5	5	5	10
Wire Size Solder mm ² /AWG	≤2/14	≤2/14	≤0.785/18	≤0.785/18	≤0.785/18	≤0.785/18	≤0.785/18

Match Connector

RHTOY13B1



NINGBO RHT ELECTRONIC CO.,LTD

UNITS:mm	SHEET SIZE: A4	SCALE:---	DRWN BY PAN
0~3	3~18	18~50	50~120
±0.12	±0.15	±0.3	±0.5

CHK'D BY FENG
APPR BY ZHAN

WATERPROOF MALE SOCKET PANEL MOUNT CONNECTOR IP68 ROHS	
THIRD ANGLE PROJECTION 	RHTOY13B2-XX