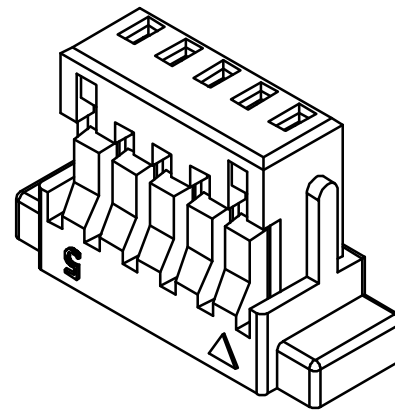
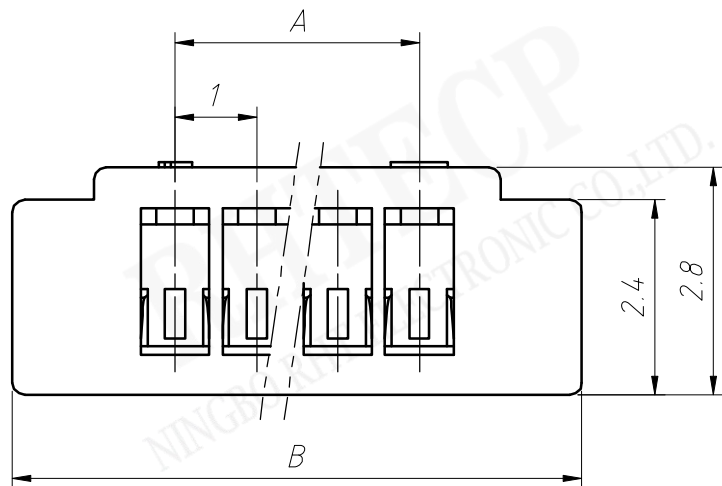


Circuit	Dimensions(mm)	
	A	B
02	1.0	5.0
03	2.0	6.0
04	3.0	7.0
05	4.0	8.0
06	5.0	9.0
07	6.0	10.0
08	7.0	11.0
09	8.0	12.0
10	9.0	13.0
11	10.0	14.0
12	11.0	15.0
13	12.0	16.0
14	13.0	17.0
--	----	----
30	29.0	33.0

Material:
Housing:PBT(UL 94V-0/V-2),White

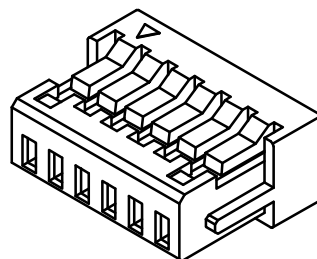
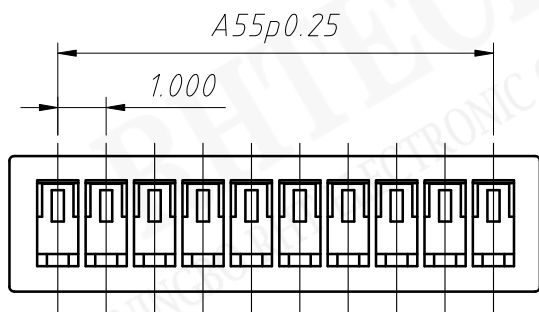
- Electrical Characteristics:**
- 1.Poles: 2 to 30P
 - 2.Current rating: 1.0A
 - 3.Voltage rating: 50V
 - 4.Temperature range: -25°C to +85°C
 - 5.Contact resistance: $\leq 20m\Omega$
 - 6.Insulation resistance: $\geq 100M\Omega$
 - 7.Withstand voltage: 500V AC/minute
 - 8.Applicable wire: AWG #32 to #28



Order Information

RE-C-XF1-1.00-1-XX-H

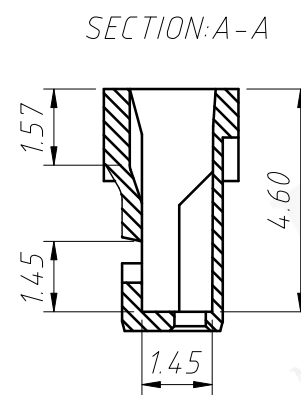
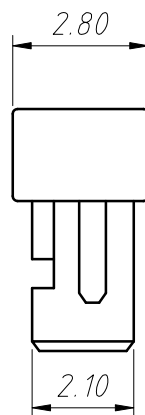
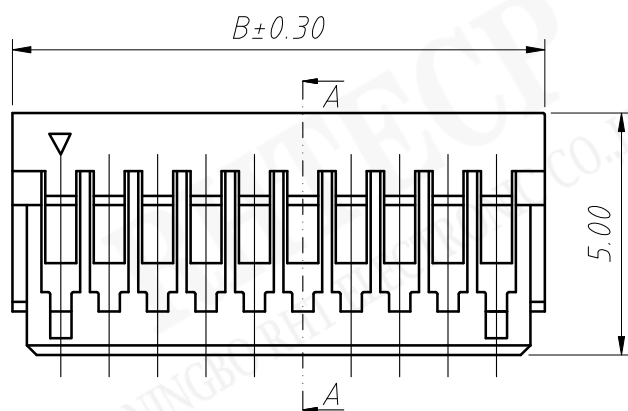
- Type:H=Housing With Ear
- PIN Number: 02~30Pin
- Pins: 1-Single layer
- Pitch: 1.00=1.00mm
- Series No.
- Part NO



Circuit	Dimensions(mm)	
	A	B
02	1.0	3.0
03	2.0	4.0
04	3.0	5.0
05	4.0	6.0
06	5.0	7.0
07	6.0	8.0
08	7.0	9.0
09	8.0	10.0
10	9.0	11.0
11	10.0	12.0
12	11.0	13.0
13	12.0	14.0
14	13.0	15.0
--	----	----
20	19.0	21.0

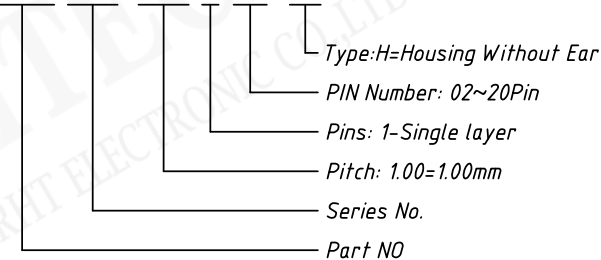
Material:
Housing:PBT(UL 94 V-0/V-2),White

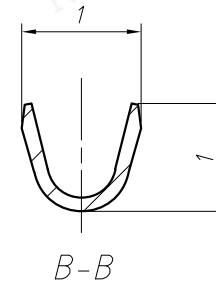
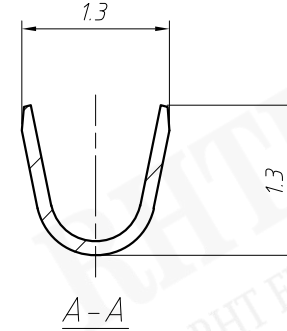
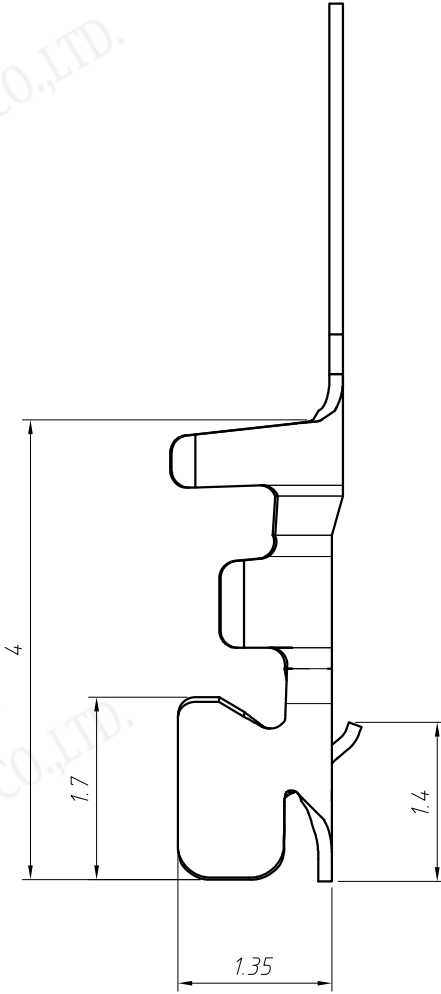
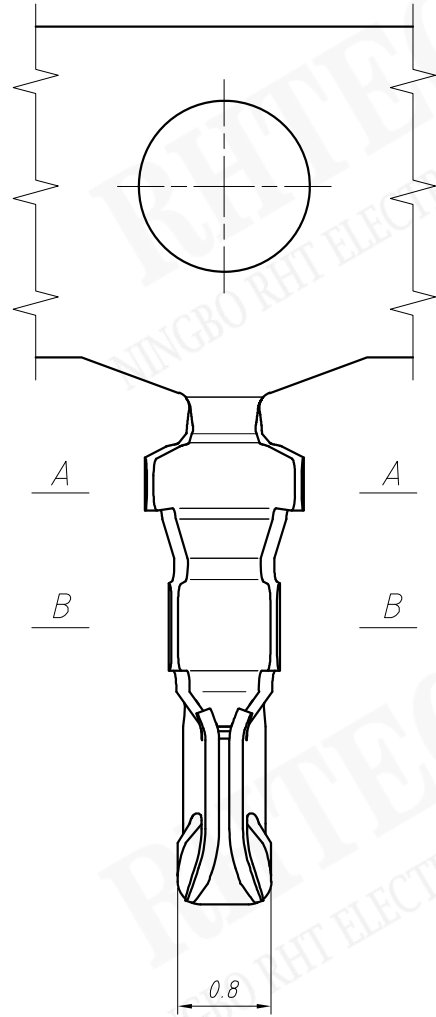
- Electrical Characteristics:
- 1.Poles: 2 to 30P
 - 2.Current rating: 1.0A
 - 3.Voltage rating: 50V
 4. Temperature range: -25°C to +85°C
 - 5.Contact resistance: $\leq 20m\Omega$
 - 6.Insulation resistance: $\geq 100M\Omega$
 - 7.Withstand voltage: 500V AC/minute
 - 8.Applicable wire: AWG #32 to #28



Order Information

RE-C-XF1-1.00-1-XX-H3

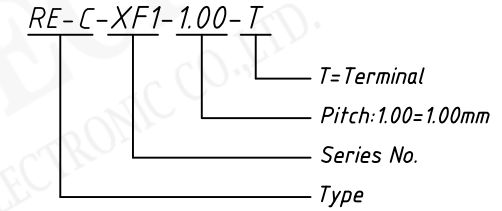




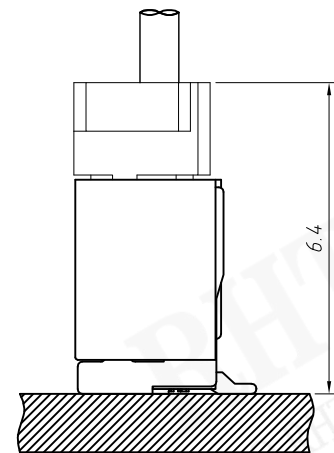
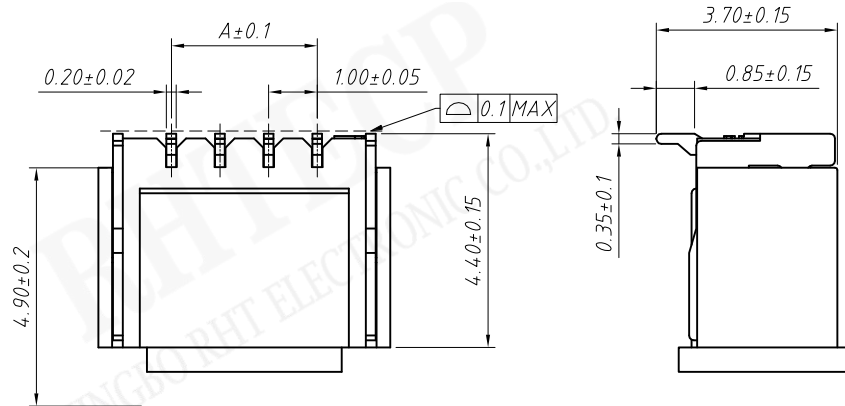
Material:
Terminal: Phos Bronze,
Tin plating, 15000PCB/Roll

- Electrical Characteristics:**
1. Poles: 2 to 30P
 2. Current rating: 1.0A
 3. Voltage rating: 50V
 4. Temperature range: -25°C to +85°C
 5. Contact resistance: $\leq 20m\Omega$
 6. Insulation resistance: $\geq 100M\Omega$
 7. Withstand voltage: 500V AC/minute
 8. Applicable wire: AWG #32 to #28

Order Information



UNITS:mm	SHEET SIZE:A4		SCALE:---
>0~3	>3~18	>18~50	>50~120
±0.12	±0.15	±0.3	±0.5

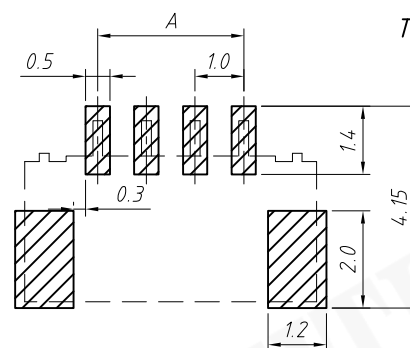
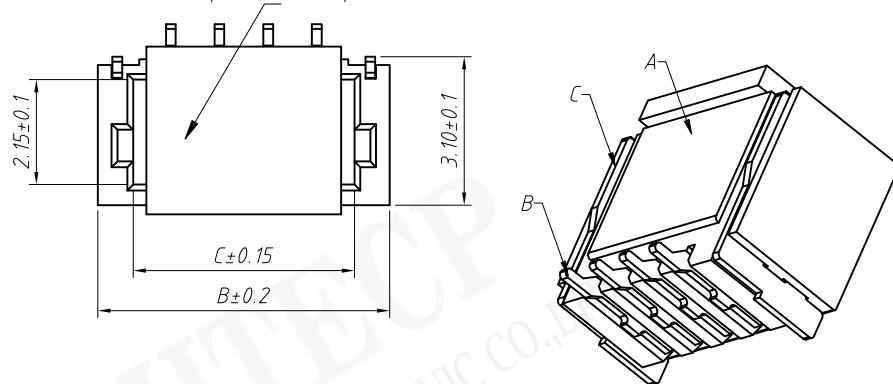


Assembly Layout

Material:
 Insulator: LCP UL 94V-0, Beige
 Contacts: Phosphor Bronze, Tin Plated
 Solder Tab: Phosphor Bronze, Tin Plated

Electrical Specification:
 Contact resistance: $\leq 20m\Omega$
 Insulation resistance: $\geq 100M\Omega$
 Rated voltage: 50V AC DC
 Rated current: 0.5A AC DC
 Withstand Voltage: 500V AC/minute
 Temperature Range: $-25^{\circ}C \sim +105^{\circ}C$

Suction cup installed in product center



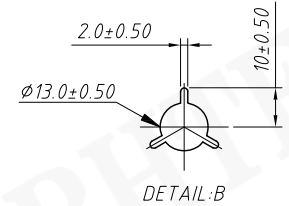
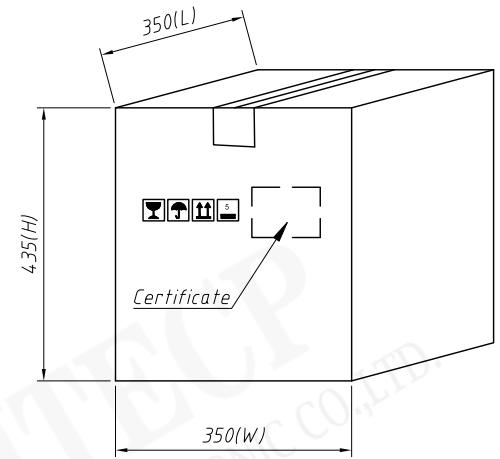
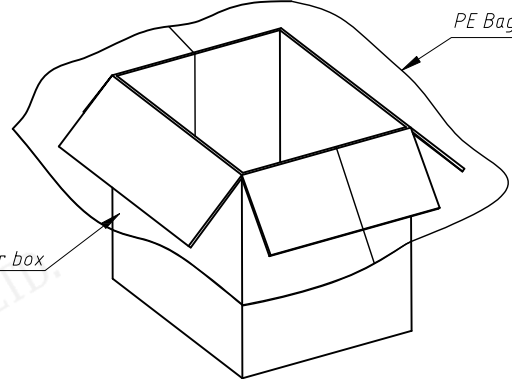
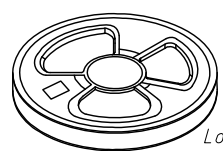
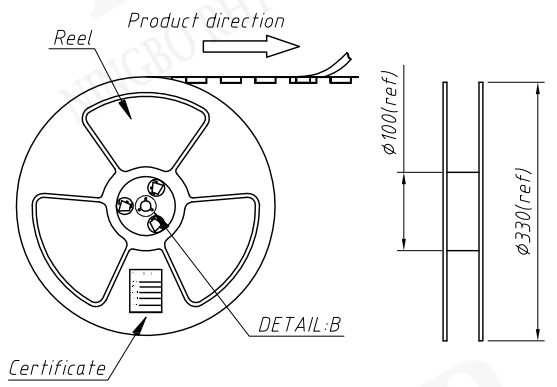
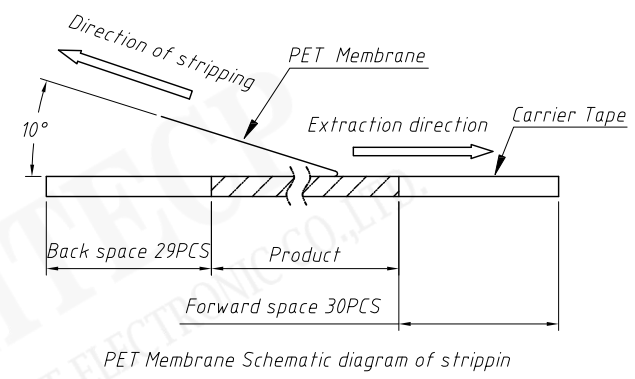
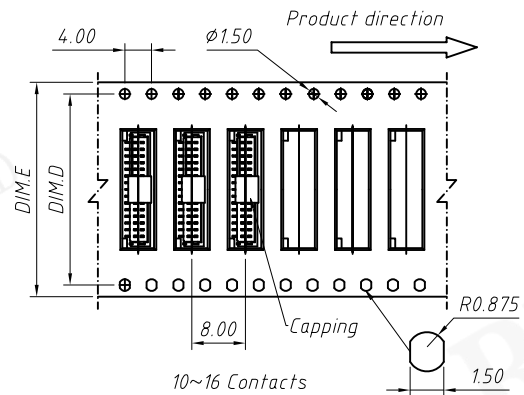
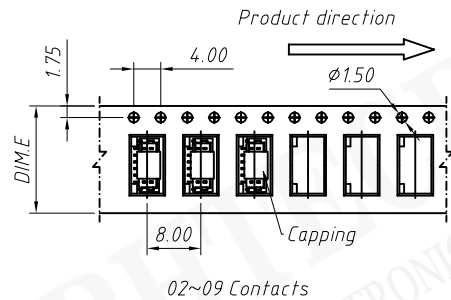
SUGGESTED PCB LAYOUT

Order Information

RE-C-XF1-1.00-1-XX-VM-X

Pitch: 1.00mm
 Pins: 1=Single layer
 Pin NO: 04~40
 SMT Straight Male pin
 Packing: R=Reel, T=Tubes

Circuit	Dimensions(mm)			Circuit	Dimensions(mm)		
	A	B	C		A	B	C
02	1.00	4.00	2.50	10	9.00	12.00	10.50
03	2.00	5.00	3.50	11	10.00	13.00	11.50
04	3.00	6.00	4.50	12	11.00	14.00	12.50
05	4.00	7.00	5.50	13	12.00	15.00	13.50
06	5.00	8.00	6.50	14	13.00	16.00	14.50
07	6.00	9.00	7.50	15	14.00	17.00	15.50
08	7.00	10.00	8.50	16	15.00	18.00	16.50
09	8.00	11.00	9.50	20	19.00	22.00	20.50



Circuits	DIM.D	DIM.E	Q'ty/Reel	Packing Reel/Carton
02-05 PIN	--	16	1500 PCS	20/Reel
06-14 PIN	--	24	1500 PCS	15/Reel
15-18 PIN	28.4	32	1500 PCS	11/Reel

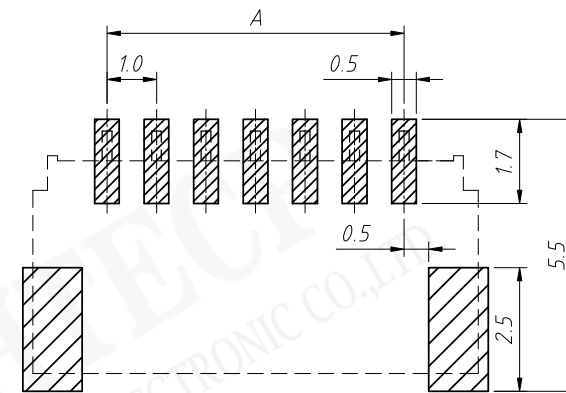
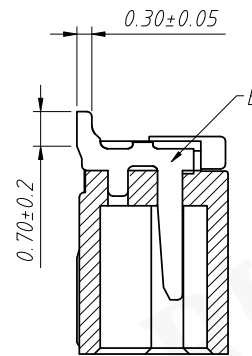
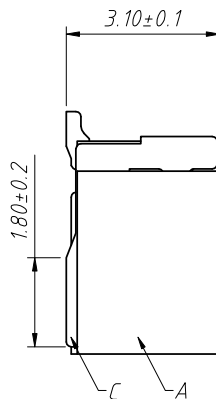
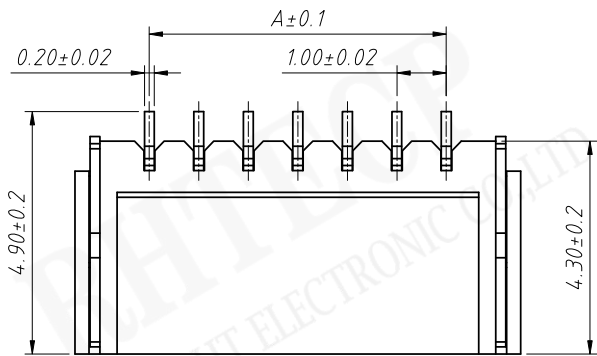
Packaging instructions:
 Pack the finished products into reels, each with 1500 PCS.
 The product will be packed by pasting a certificate on the reel.
 The reel is put into the outer box, and the outer box is fitted with one first.
 Large PE bags with qualified certificates affixed on the outer case.

RHTECP NINGBO RHT ELECTRONIC CO.,LTD

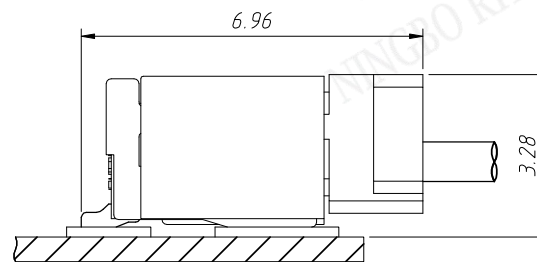
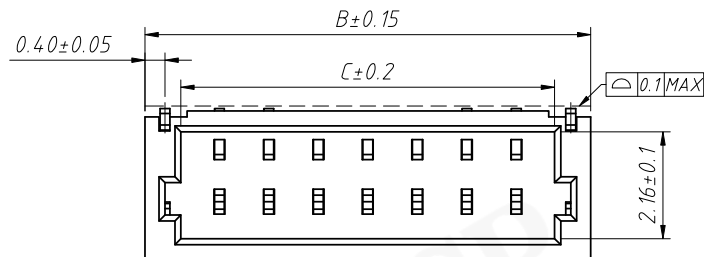
UNITS:mm	SHEET SIZE:A4	SCALE:---
>0~3	>3~18	>18~50
>50~120		
± 0.12	± 0.15	± 0.3
		± 0.5

RE-C-XF1-1.00-1-XX-VM

CONNECTORS



Recommend PCB Layout



Assembly Layout

Material:

Insulator:LCP UL 94V-0,Beige

Contacts:Phosphor Bronze,Tin Plated

Solder Tab:Phosphor Bronze,Tin Plated

Electrical Specification:

Poles: 02 to 20

Contact resistance:≤20mΩ

Insulation resistance:≥100MΩ

Rated voltage:50V AC DC

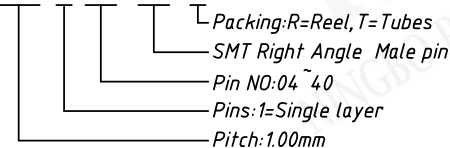
Rated current:0.5A AC DC

Withstand Voltage:500V AC/minute

Temperature Range:-25℃~ +105℃

Order Information

RE-C-XF1-1.00-1-XX-RM-X



Circuit	Dimensions(mm)			Circuit	Dimensions(mm)		
	A	B	C		A	B	C
02	1.00	4.00	2.50	10	9.00	12.00	10.50
03	2.00	5.00	3.50	11	10.00	13.00	11.50
04	3.00	6.00	4.50	12	11.00	14.00	12.50
05	4.00	7.00	5.50	13	12.00	15.00	13.50
06	5.00	8.00	6.50	14	13.00	16.00	14.50
07	6.00	9.00	7.50	15	14.00	17.00	15.50
08	7.00	10.00	8.50	16	15.00	18.00	16.50
09	8.00	11.00	9.50	20	19.00	22.00	20.50



NINGBO RHT ELECTRONIC CO.,LTD

UNITS:mm

SHEET SIZE:A4

SCALE:---

RE-C-XF1-1.00-1-XX-RM

>0~3

>3~18

>18~50

>50~120

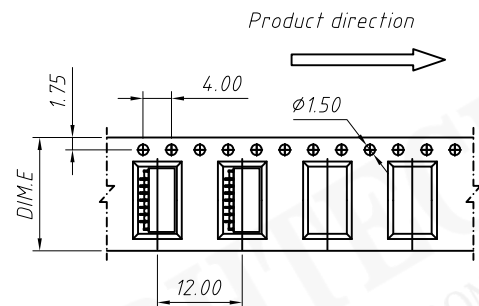
±0.12

±0.15

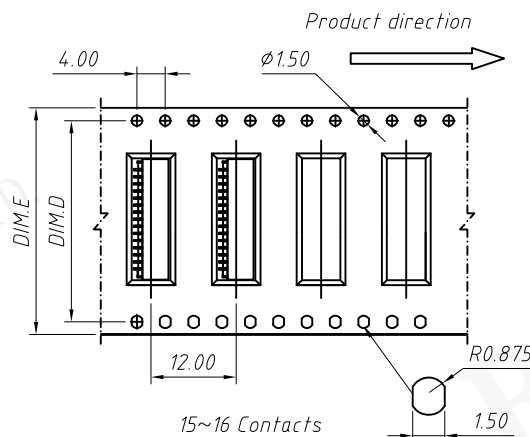
±0.3

±0.5

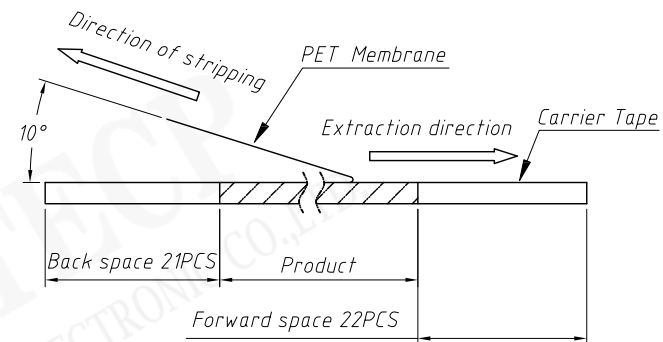
CONNECTORS



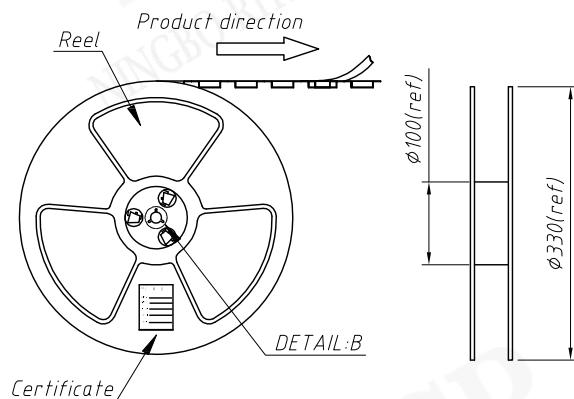
02~14 Contacts



15~16 Contacts

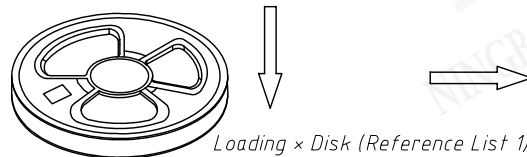


PET Membrane Schematic diagram of stripping

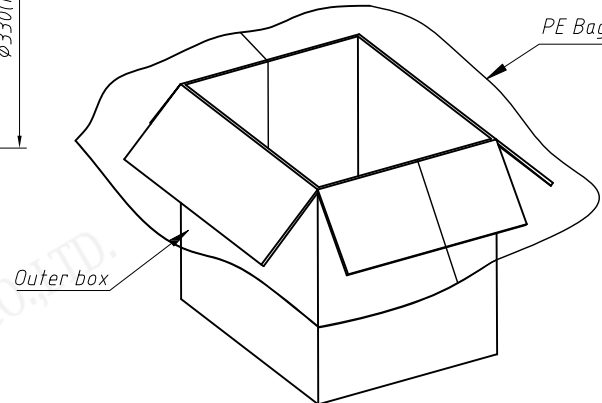


DETAIL:B

Certificate

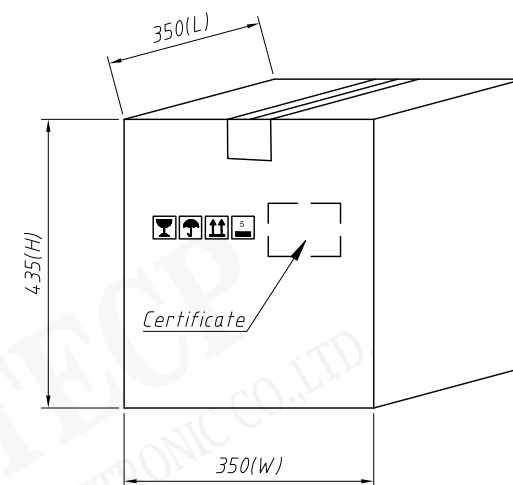


Loading x Disk (Reference List 1)

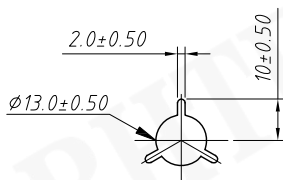


Outer box

PE Bag



Certificate



DETAIL:B

Circuits	DIM.D	DIM.E	Q'ty/Reel	Packing Reel/Carton
02 PIN	--	12	2000 PCS	25/Reel
03-06 PIN	--	16	1500 PCS	20/Reel
07-14 PIN	--	24	1500 PCS	15/Reel
15-18 PIN	28.4	32	1500 PCS	11/Reel

Packaging instructions:

Pack the finished products into reels, each with 1500 PCS.

The product will be packed by pasting a certificate on the reel.

The reel is put into the outer box, and the outer box is fitted with one first.

Large PE bags with qualified certificates affixed on the outer case.

RHTECP NINGBO RHT ELECTRONIC CO.,LTD

UNITS:mm

SHEET SIZE:A4

SCALE:---

RE-C-XF1-1.00-1-XX-RM

>0~3

>3~18

>18~50

>50~120

±0.12

±0.15

±0.3

±0.5

CONNECTORS