

Number of Contacts	DIMENSION		
	A±0.25	B±0.20	C±0.20
09	30.81	24.99	16.33
15	39.14	33.32	24.66
25	53.04	47.04	38.38
37	69.32	63.50	54.84

RECOMMENDED PCB LAYOUT
TOLERANCE: ±0.05mm

Material:
Housing: PBT+30% Glass filled ,UL94V-0
Contacts: Brass ,Gold Plating or
Gold Plating on Contact Arer,
Tin on Solder Tail.
Shell: Steel, Nickel Plating

Electrical Characteristics:
Current Rating: 5 AMP
Insulator Resistance: 1000MΩ Min. at DC 500V
Withstanding Voltage: 500V AC (rms) for 1 minute
Contact Resistance: 20mΩ Max. Initial
Operating Temperature: -4.0°C ~ +105°C

Call waiting force		
Contacts	Insertion	Withdraw
09M/09F	≤4.0kgf	≥1.8kgf
15M/15F	≤4.5kgf	≥2.0kgf
25M/25F	≤6.0kgf	≥2.5kgf
37M/37F	≤8.0kgf	≥3.5kgf

Order Information

RE - C - 221A - XX - F - L

D-SUB Connector, _____
2 Row Through Hole, Riveting Before
XX-No. of 09, 15, 25, 37, 50pins _____
Connector type: F-Female _____
Housing Color: _____
B-Black L-Blue W-White



NINGBO RHT ELECTRONIC CO.,LTD

UNITS:mm

SHEET SIZE:A4

SCALE:---

RE-C-221A-XX-F-L

>0~3

>3~18

>18~50

>50~120

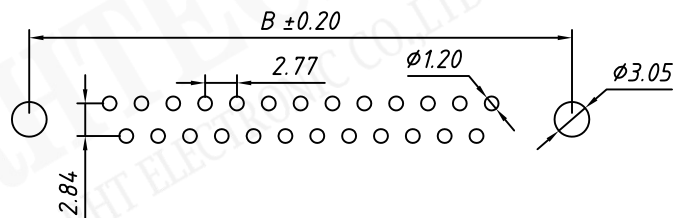
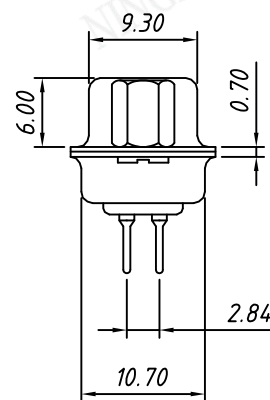
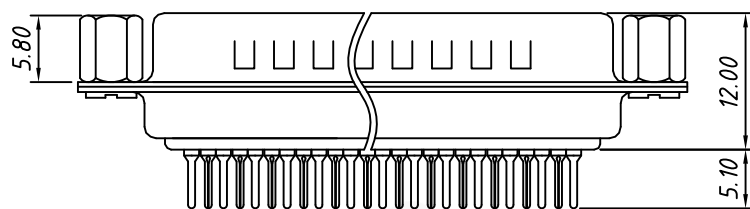
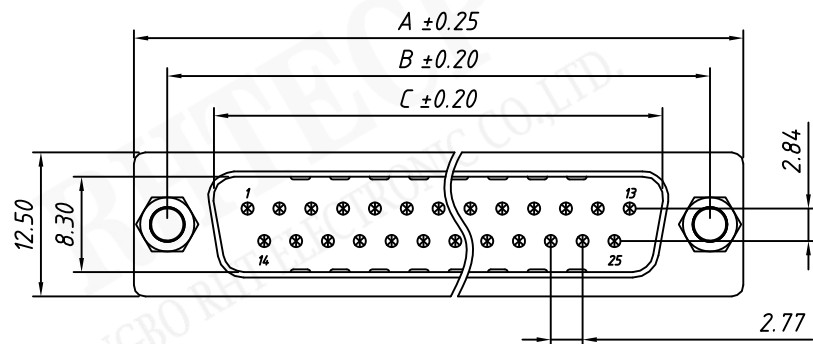
±0.12

±0.15

±0.3

±0.5

CONNECTORS



RECOMMENDED PCB LAYOUT
TOLERANCE: $\pm 0.05\text{mm}$

Number of Contacts	DIMENSION		
	$A \pm 0.25$	$B \pm 0.20$	$C \pm 0.20$
09	30.81	24.99	16.92
15	39.14	33.32	25.25
25	53.04	47.04	38.96
37	69.32	63.50	55.42

Material:

Housing: PBT+30% Glass filled ,UL94V-0

Contacts: Brass ,Gold Plating or
Gold Plating on Contact Area,
Tin on Solder Tail.

Shell: Steel, Nickel Plating

Electrical Characteristics:

Current Rating: 5 AMP

Insulator Resistance: 1000M Ω Min. at DC 500V

Withstanding Voltage: 500V AC (rms) for 1 minute

Contact Resistance: 20m Ω Max. Initial

Operating Temperature: $-40^{\circ}\text{C} \sim +105^{\circ}\text{C}$

Call waiting force		
Contacts	Insertion	Withdraw
09M/09F	$\leq 4.0\text{kgf}$	$\geq 1.8\text{kgf}$
15M/15F	$\leq 4.5\text{kgf}$	$\geq 2.0\text{kgf}$
25M/25F	$\leq 6.0\text{kgf}$	$\geq 2.5\text{kgf}$
37M/37F	$\leq 8.0\text{kgf}$	$\geq 3.5\text{kgf}$

Order Information

RE - C - 221A - XX - M - L

D-SUB Connector,
2 Row Through Hole, Riveting Before

XX-No. of 09, 15, 25, 37, 50 pins

Connector type: M-Male

Housing Color:

B-Black L-Blue W-White



NINGBO RHT ELECTRONIC CO.,LTD

UNITS:mm

SHEET SIZE:A4

SCALE:---

>0~3

>3~18

>18~50

>50~120

± 0.12

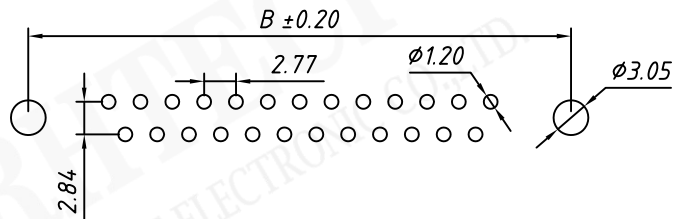
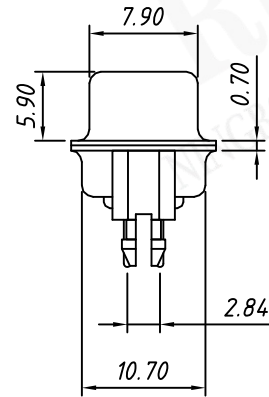
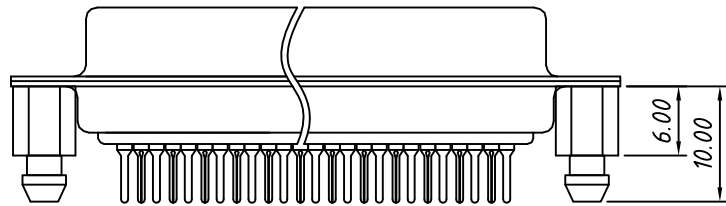
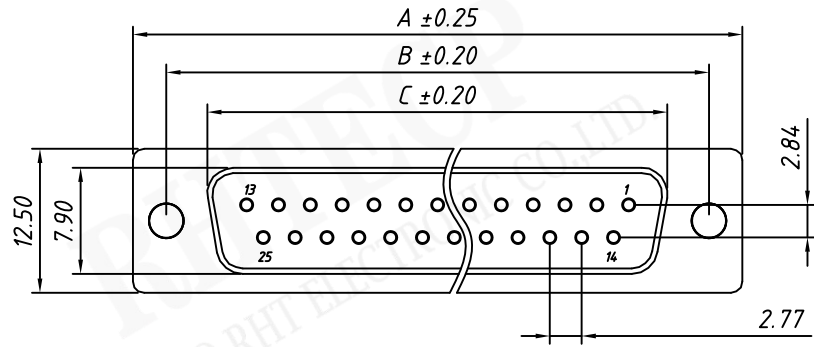
± 0.15

± 0.3

± 0.5

RE-C-221A-XX-M-L

CONNECTORS



RECOMMENDED PCB LAYOUT
TOLERANCE: ±0.05mm

Number of Contacts	DIMENSION		
	A±0.25	B±0.20	C±0.20
09	30.81	24.99	16.33
15	39.14	33.32	24.66
25	53.04	47.04	38.38
37	69.32	63.50	54.84

Material:
Housing: PBT+30% Glass filled,UL94V-0
Contacts: Brass,Gold Plating or
Gold Plating on Contact Area,
Tin on Solder Tail.
Shell: Steel, Nickel Plating

Electrical Characteristics:
Current Rating: 5 AMP
Insulator Resistance: 1000MΩ Min. at DC 500V
Withstanding Voltage: 500V AC (rms) for 1 minute
Contact Resistance: 20mΩ Max. Initial
Operating Temperature: -40°C ~ +105°C

Call waiting force		
Contacts	Insertion	Withdraw
09M/09F	≤4.0kgf	≥1.8kgf
15M/15F	≤4.5kgf	≥2.0kgf
25M/25F	≤6.0kgf	≥2.5kgf
37M/37F	≤8.0kgf	≥3.5kgf

Order Information

RE - C - 221B - XX - F - L

D-SUB Connector,
2 Row Through Hole,Riveting Later Harpoons
XX-No.of 09,15,25,37,50pins
Connector type: F-Female
Housing Color:
B-Black L-Blue W-White



NINGBO RHT ELECTRONIC CO.,LTD

UNITS:mm

SHEET SIZE:A4

SCALE:---

>0~3

>3~18

>18~50

>50~120

±0.12

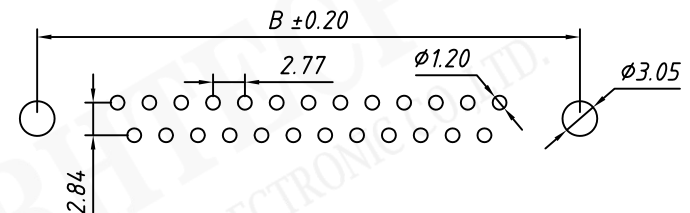
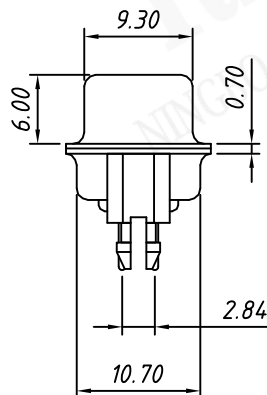
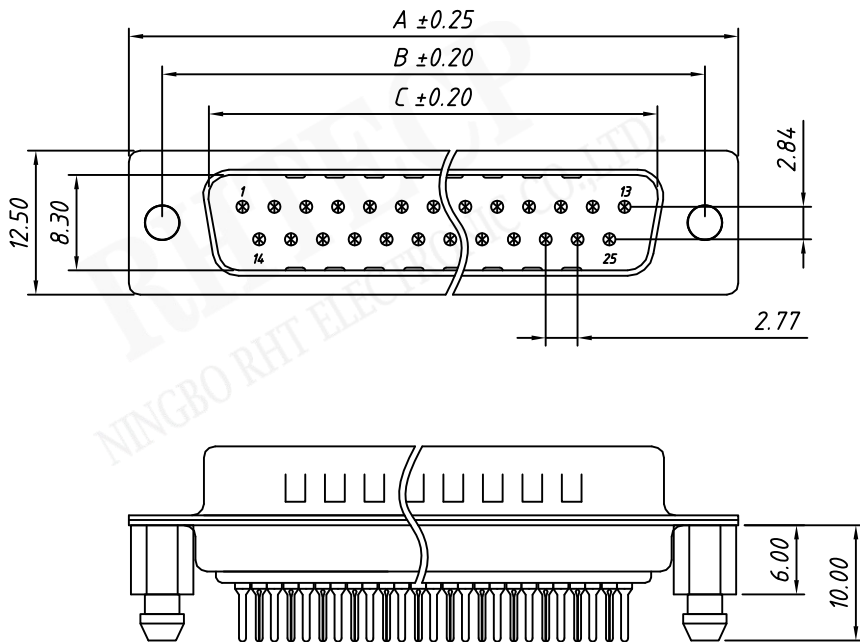
±0.15

±0.3

±0.5

RE-C-221B-XX-F-L

CONNECTORS



RECOMMENDED PCB LAYOUT
 TOLERANCE: $\pm 0.05\text{mm}$

Number of Contacts	DIMENSION		
	$A \pm 0.25$	$B \pm 0.20$	$C \pm 0.20$
09	30.81	24.99	16.92
15	39.14	33.32	25.25
25	53.04	47.04	38.96
37	69.32	63.50	55.42

Material:
 Housing: PBT+30% Glass filled, UL94V-0
 Contacts: Brass, Gold Plating or Gold Plating on Contact Area, Tin on Solder Tail
 Shell: Steel, Nickel Plating

Electrical Characteristics:
 Current Rating: 5 AMP
 Insulator Resistance: 1000M Ω Min. at DC 500V
 Withstanding Voltage: 500V AC (rms) for 1 minute
 Contact Resistance: 20m Ω Max. Initial
 Operating Temperature: $-40^{\circ}\text{C} \sim +105^{\circ}\text{C}$

Call waiting force		
Contacts	Insertion	Withdraw
09M/09F	$\leq 4.0\text{kgf}$	$\geq 1.8\text{kgf}$
15M/15F	$\leq 4.5\text{kgf}$	$\geq 2.0\text{kgf}$
25M/25F	$\leq 6.0\text{kgf}$	$\geq 2.5\text{kgf}$
37M/37F	$\leq 8.0\text{kgf}$	$\geq 3.5\text{kgf}$

Order Information

RE - C - 221B - XX - M - L

D-SUB Connector,
 2 Row Through Hole, Riveting Later Harpoons
 XX-No. of 09, 15, 25, 37, 50 pins
 Connector type: M-Male
 Housing Color: B-Black L-Blue W-White

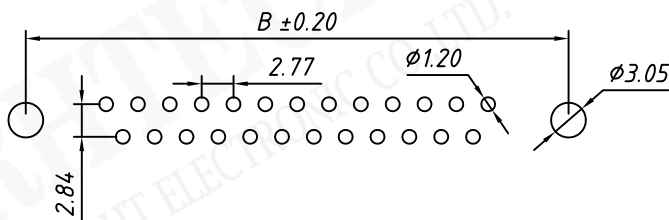
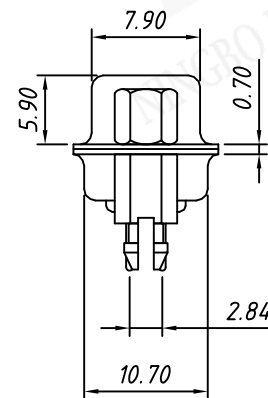
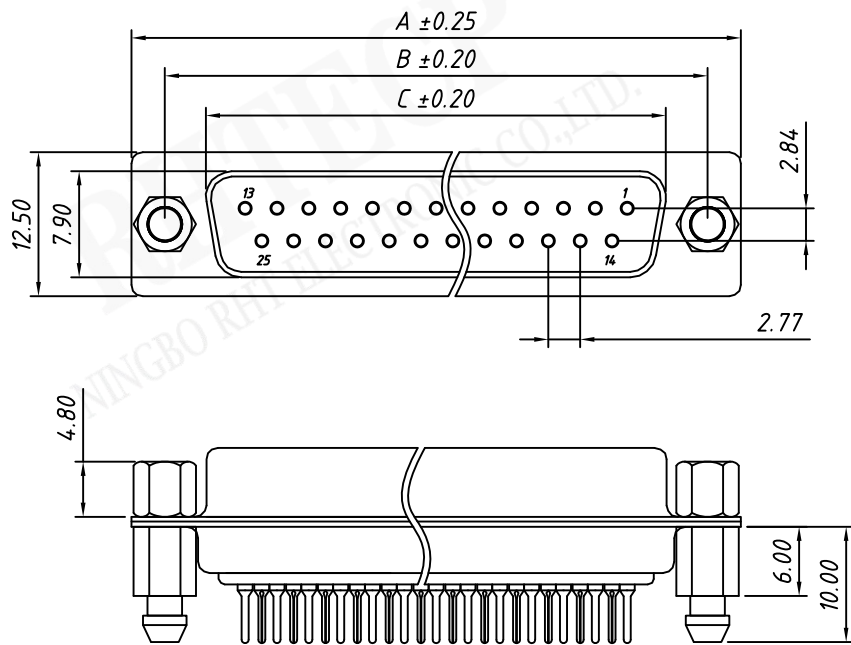


NINGBO RHT ELECTRONIC CO.,LTD

UNITS:mm	SHEET SIZE:A4	SCALE:---	
>0~3	>3~18	>18~50	>50~120
± 0.12	± 0.15	± 0.3	± 0.5

RE-C-221B-XX-M-L

CONNECTORS



RECOMMENDED PCB LAYOUT
TOLERANCE: ±0.05mm

Number of Contacts	DIMENSION		
	A±0.25	B±0.20	C±0.20
09	30.81	24.99	16.33
15	39.14	33.32	24.66
25	53.04	47.04	38.38
37	69.32	63.50	54.84

Material:
Housing: PBT+30% Glass filled, UL94V-0
Contacts: Brass, Gold Plating or Gold Plating on Contact Area, Tin on Solder Tail.
Shell: Steel, Nickel Plating

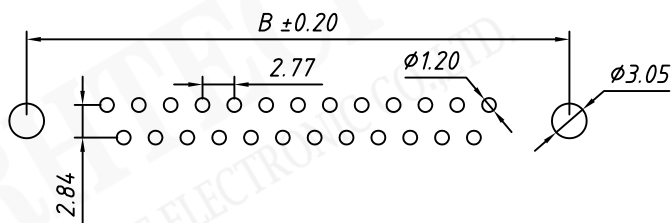
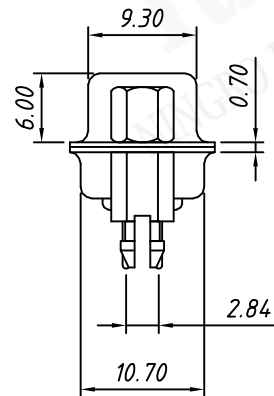
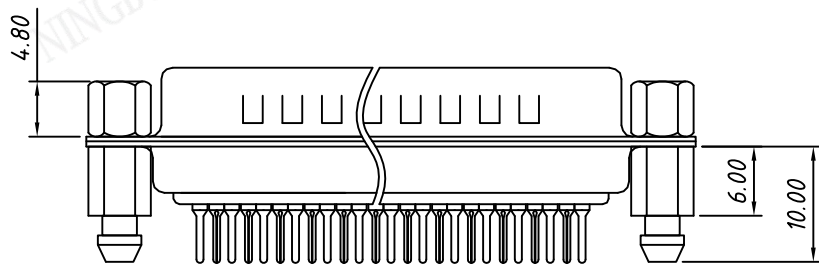
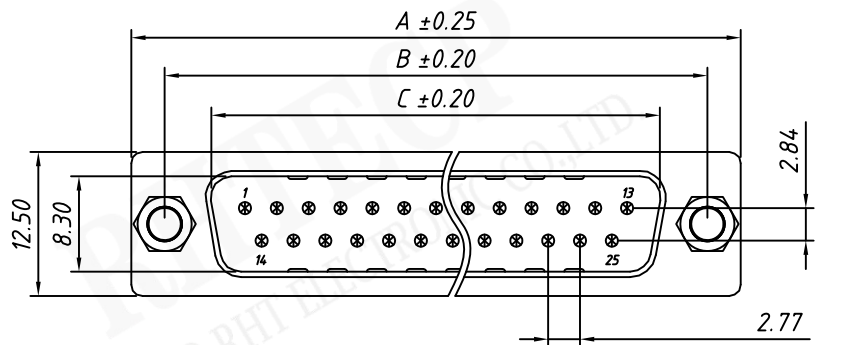
Electrical Characteristics:
Current Rating: 5 AMP
Insulator Resistance: 1000MΩ Min. at DC 500V
Withstanding Voltage: 500V AC (rms) for 1 minute
Contact Resistance: 20mΩ Max. Initial
Operating Temperature: -40°C ~ +105°C

Call waiting force		
Contacts	Insertion	Withdraw
09M/09F	≤4.0kgf	≥1.8kgf
15M/15F	≤4.5kgf	≥2.0kgf
25M/25F	≤6.0kgf	≥2.5kgf
37M/37F	≤8.0kgf	≥3.5kgf

Order Information

RE - C - 221C - XX - F - L

D-SUB Connector, 2 Row Through Hole, After Lock Screw Rivet Harpoons
XX-No. of 09, 15, 25, 37, 50 pins
Connector type: F-Female
Housing Color: B-Black L-Blue W-White



RECOMMENDED PCB LAYOUT
TOLERANCE: ±0.05mm

Number of Contacts	DIMENSION		
	A±0.25	B±0.20	C±0.20
09	30.81	24.99	16.92
15	39.14	33.32	25.25
25	53.04	47.04	38.96
37	69.32	63.50	55.42

Material:
Housing: PBT+30% Glass filled,UL94V-0
Contacts: Brass,Gold Plating or
Gold Plating on Contact Arer,
Tin on Solder Tail.
Shell: Steel, Nickel Plating

Electrical Characteristics:
Current Rating: 5 AMP
Insulator Resistance: 1000MΩ Min. at DC 500V
Withstanding Voltage: 500V AC (rms) for 1 minute
Contact Resistance: 20mΩ Max. Initial
Operating Temperature: -40°C ~ +105°C

Call waiting force		
Contacts	Insertion	Withdraw
09M/09F	≤4.0kgf	≥1.8kgf
15M/15F	≤4.5kgf	≥2.0kgf
25M/25F	≤6.0kgf	≥2.5kgf
37M/37F	≤8.0kgf	≥3.5kgf

Order Information

RE - C - 221C - XX - M - L

D-SUB Connector,
2 Row Through Hole,After Lock Screw Rivet Harpoons
XX-No.of 09,15,25,37,50pins
Connector type: M-Male
Housing Color:
B-Black L-Blue W-White



NINGBO RHT ELECTRONIC CO.,LTD

UNITS:mm

SHEET SIZE:A4

SCALE:---

>0~3

>3~18

>18~50

>50~120

±0.12

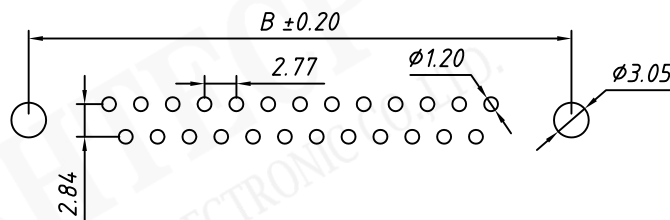
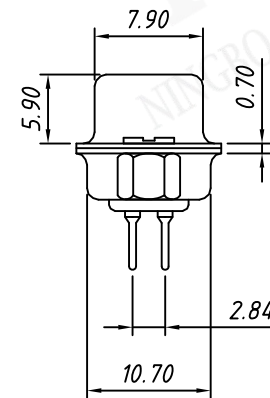
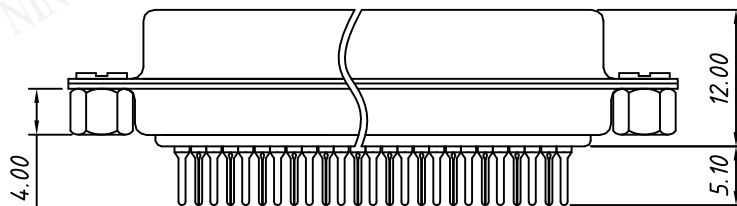
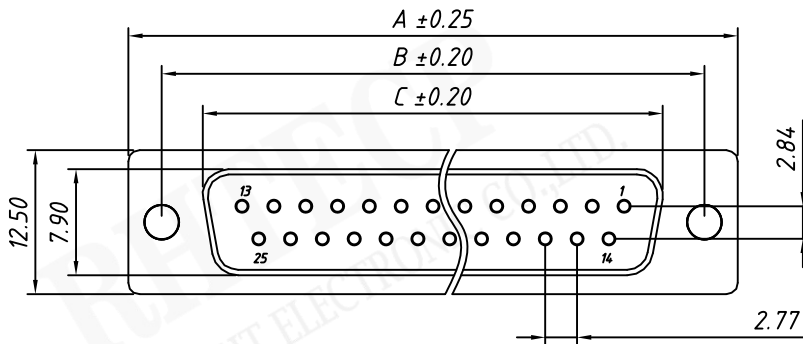
±0.15

±0.3

±0.5

RE-C-221C-XX-M-L

CONNECTORS



RECOMMENDED PCB LAYOUT
TOLERANCE: $\pm 0.05\text{mm}$

Number of Contacts	DIMENSION		
	A ± 0.25	B ± 0.20	C ± 0.20
09	30.81	24.99	16.33
15	39.14	33.32	24.66
25	53.04	47.04	38.38
37	69.32	63.50	54.84

Material:
Housing: PBT+30% Glass filled ,UL 94V-0
Contacts: Brass ,Gold Plating or Gold Plating on Contact Arer, Tin on Solder Tail.
Shell: Steel, Nickel Plating

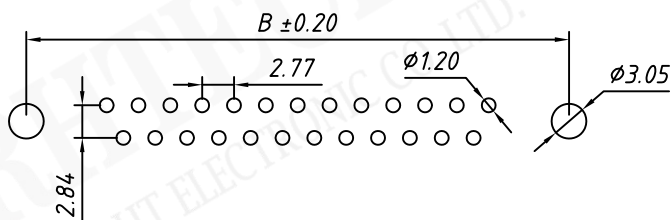
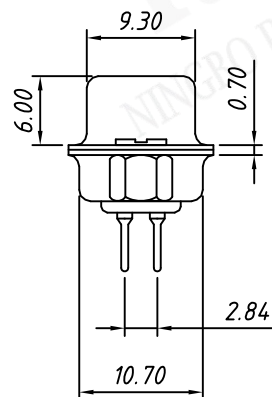
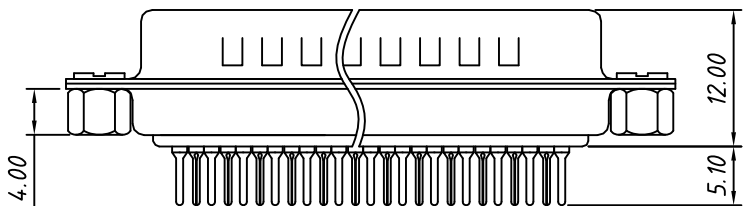
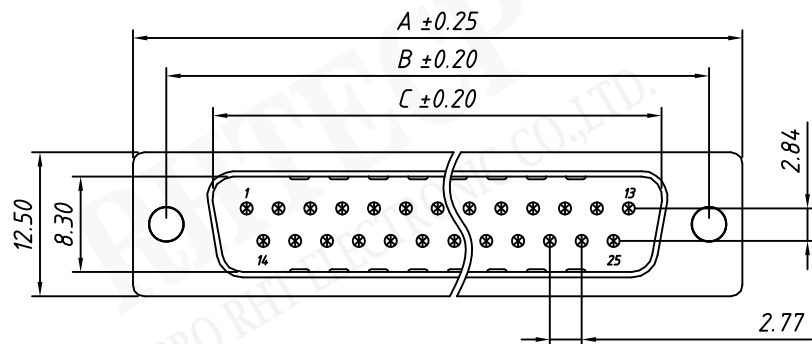
Electrical Characteristics:
Current Rating: 5 AMP
Insulator Resistance: 1000M Ω Min. at DC 500V
Withstanding Voltage: 500V AC (rms) for 1 minute
Contact Resistance: 20m Ω Max. Initial
Operating Temperature: -40 $^{\circ}\text{C}$ ~ +105 $^{\circ}\text{C}$

Call waiting force		
Contacts	Insertion	Withdraw
09M/09F	$\leq 4.0\text{kgf}$	$\geq 1.8\text{kgf}$
15M/15F	$\leq 4.5\text{kgf}$	$\geq 2.0\text{kgf}$
25M/25F	$\leq 6.0\text{kgf}$	$\geq 2.5\text{kgf}$
37M/37F	$\leq 8.0\text{kgf}$	$\geq 3.5\text{kgf}$

Order Information

RE - C - 221D - XX - F - L

D-SUB Connector,
 2 Row Through Hole,Riveting After
 XX-No. of 09,15,25,37,50pins
 Connector type: F-Female
 Housing Color:
 B-Black L-Blue W-White



RECOMMENDED PCB LAYOUT
TOLERANCE: $\pm 0.05\text{mm}$

Number of Contacts	DIMENSION		
	A ± 0.25	B ± 0.20	C ± 0.20
09	30.81	24.99	16.92
15	39.14	33.32	25.25
25	53.04	47.04	38.96
37	69.32	63.50	55.42

Material:
Housing: PBT+30% Glass filled, UL94V-0
Contacts: Brass, Gold Plating or Gold Plating on Contact Area, Tin on Solder Tail.
Shell: Steel, Nickel Plating

Electrical Characteristics:
Current Rating: 5 AMP
Insulator Resistance: 1000M Ω Min. at DC 500V
Withstanding Voltage: 500V AC (rms) for 1 minute
Contact Resistance: 20m Ω Max. Initial
Operating Temperature: $-40^{\circ}\text{C} \sim +105^{\circ}\text{C}$

Call waiting force		
Contacts	Insertion	Withdraw
09M/09F	$\leq 4.0\text{kgf}$	$\geq 1.8\text{kgf}$
15M/15F	$\leq 4.5\text{kgf}$	$\geq 2.0\text{kgf}$
25M/25F	$\leq 6.0\text{kgf}$	$\geq 2.5\text{kgf}$
37M/37F	$\leq 8.0\text{kgf}$	$\geq 3.5\text{kgf}$

Order Information

RE - C - 221D - XX - M - L

D-SUB Connector,
2 Row Through Hole, Riveting After
XX-No. of 09, 15, 25, 37, 50 pins
Connector type: M-Male
Housing Color:
B-Black L-Blue W-White

NINGBO RHT ELECTRONIC CO.,LTD

UNITS:mm

SHEET SIZE:A4

SCALE:---

RE-C-221D-XX-M-L

>0~3

>3~18

>18~50

>50~120

± 0.12

± 0.15

± 0.3

± 0.5

CONNECTORS